

# SAFARI STABLES

THE HORSE SAFARI EXPERIENCE OF A LIFETIME!



WELCOME TO A HORSE LOVER'S PARADISE...

Where else can you stand feet away from Rhino & Lions, ride alongside Giraffe and hand feed Elephants all in one day?!

This is the ultimate adventure for any equestrian with a desire to make a difference. The project is tailored to suit every rider of all levels, with exciting activities on offer no matter your prior horse experience!

Joining us on our Safari Stables programme promises to be an experience you will never forget; make friendships to last a lifetime and enjoy music and laughter whilst making a difference under the African sky!

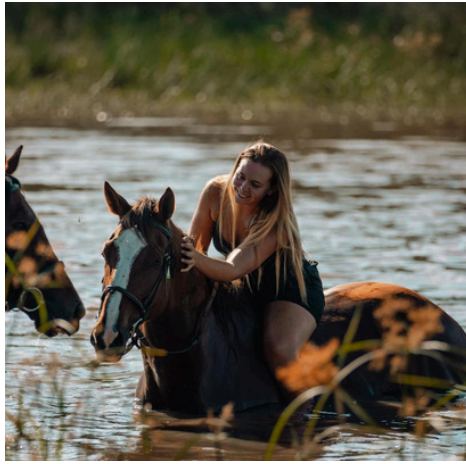
Set on 10,000 acres with a wide variety of incredible and exclusive Horse & Wildlife based activities on offer, this is a truly an unmatched adventure!

# MEET THE HORSES!

ANTELOPE PARK IS HOME TO OVER 25 HORSES WITH A WIDE VARIETY OF PERSONALITIES, MEANING WE HAVE A HORSE TO SUIT EVERY RIDING ABILITY!



CASEY



GREENWOOD



MILLIE



COFFEE



WILLOWS



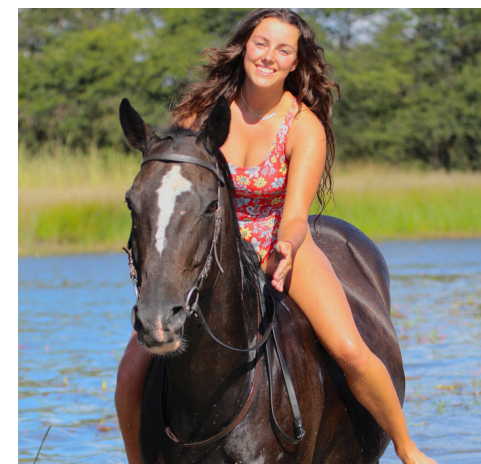
MAX



FRED



BLUFF



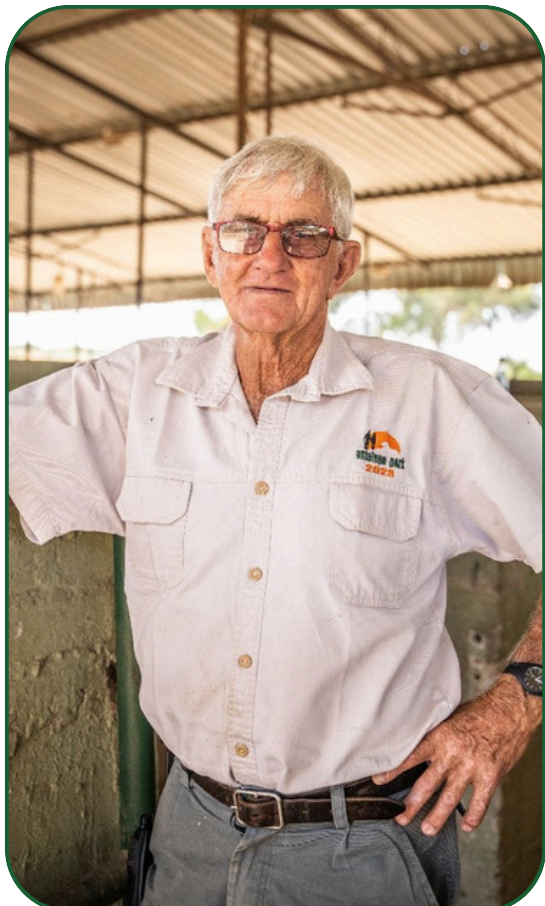
SHEIK



# RIDING ACTIVITIES

HERE ARE SOME OF THE INCREDIBLE RIDING ACTIVITIES YOU'LL TAKE PART IN!

HORSE SWIMS > CROSS COUNTRY > SUNRISE RIDES > SCHOOLING SESSIONS  
SHOWJUMPING > POLOCROSSE > SUNSET SAFARI RIDES > FULL MOON RIDE  
GYMKANAS / MOUNTED GAMES > OVERNIGHT HORSE SAFARI (EXTRA FEE)



## A LIVING LEGEND

THIS IS TED WILMOT, OUR STABLES MANAGER!

The King of Polocrosse and fondly referred to as 'Cowboy Ted' our incredible stables manager gives all of our Safari Stables participants the opportunity to learn something new everyday, no matter their prior experience level.

Ted Wilmot embodies no nonsense, passionate horsemanship. He has an incredible teaching ability due to his unbridled belief in the rider, even when they don't believe in themselves. Ted has knowledge and experience beyond the imagination, he has taken beginner riders to confident jumpers in a matter of weeks and wishes nothing more than for everyone to absolutely love their time at stables!



# A DAY IN THE LIFE...

AN OUTLINE OF WHAT YOUR DAY MAY LOOK LIKE!

PLEASE NOTE THIS IS JUST AN EXAMPLE & NOT A FIXED SCHEDULE, THIS IS AFRICA AND THINGS ARE ALWAYS SUBJECT TO CHANGE SO PLEASE BE PREPARED TO BE FLEXIBLE!

TIME	MON	TUES	WEDS	THURS	FRI
5AM				SUNRISE RIDE	
7AM	BRING IN, FEED & GROOM THE HORSES				
8AM	BREAKFAST & MORNING MEETING				
9AM	<b>STABLE MAINTANENCE</b> MUCKING OUT, MEDICAL TREATMENT, CLEANING TACK, BUILDING NEW XC JUMPS, CREATING JUMP COURSES LUNGING HORSES, PAINTING, SCHOOLING HORSES, BOUNDARY PATROL RIDES, SNARE SWEEPS & MORE!				
12PM	LUNCH & RELAX				
3PM	SHOWJUMPING OR SAFARI RIDE	SAFARI RIDE	POLOCROSSE OR GYMKANA	CROSS COUNTRY OR SAFARI RIDE	HORSE SWIM OR DRESSAGE
5:30PM	FINISHING UP WITH THE HORSES				SUNSET GAME DRIVE
6:30PM	DINNER				
7:30PM	MOVIE NIGHT OR MEDITATION	CHILLED SOCIAL NIGHT	CULTURAL OR QUIZ NIGHT	NIGHT DRIVE	CAMPING OR SOCIAL AT THE BAR



# SAFARI STABLES PRICING

Did you know that the average Big Five Horse Back Safari costs roughly £1000 PER NIGHT? That's exactly why our Safari Stables Working Holiday is so popular, you are guaranteed to see 3/5 of the same incredible animals at a much lower price and all whilst making a genuine and ethical difference through our volunteering initiatives !

This project remains open all year round, when are you joining us?

Included in our package: Laundry, Wi-Fi, Bulawayo Airport Transfers, Meals, Accommodation, 24/7 On Site Staff Support, Project Related Activities, Evening Activities and MORE!

1 WEEK - £1161	2 WEEKS - £1822	3 WEEKS - £2473	4 WEEKS - £3107	5 WEEKS - £3674
6 WEEKS - £4246	7 WEEKS - £4821	8 WEEKS - £5396	9 WEEKS - £5964	10 WEEKS - £6540
	11 WEEKS - £7116	12 WEEKS - £7601		

